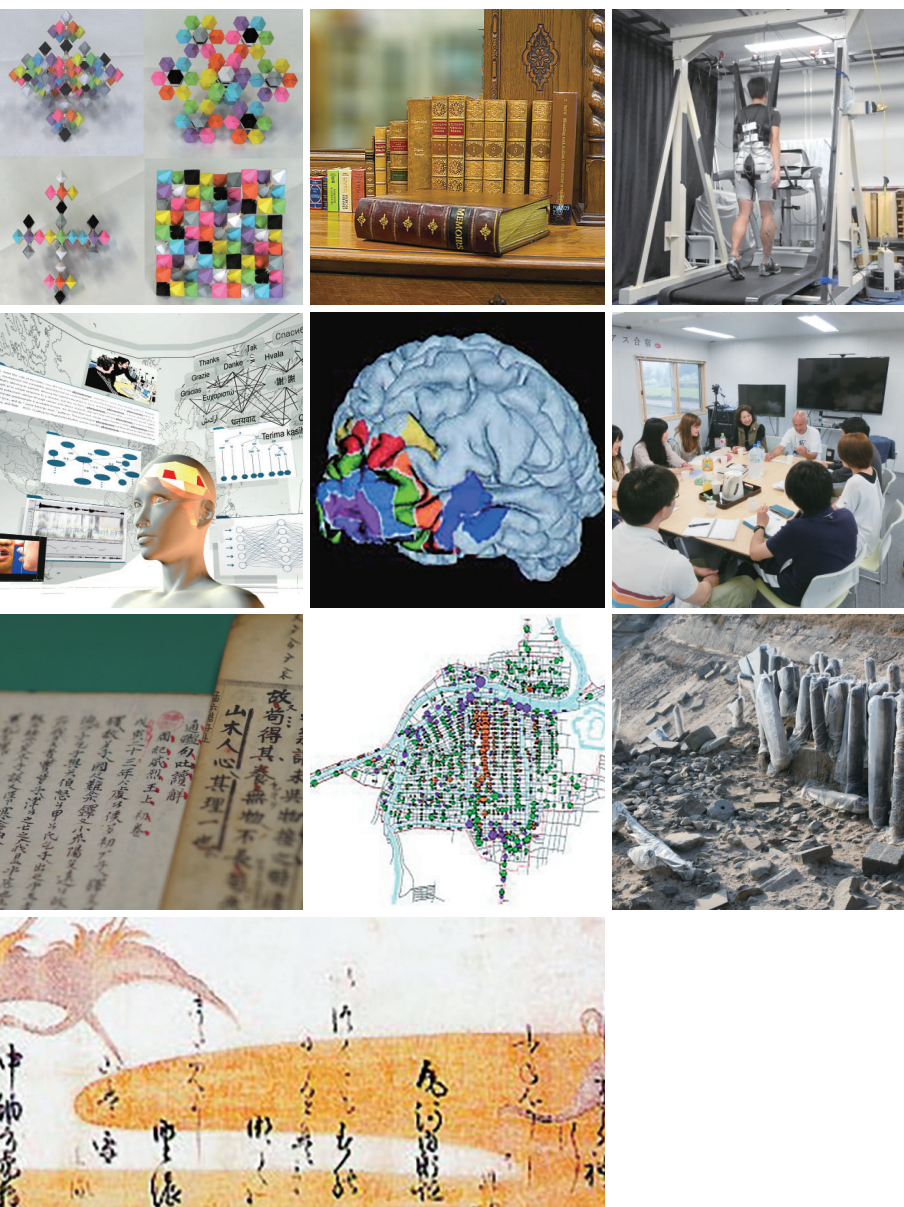


Graduate School of Human and Environmental Studies Faculty of Integrated Human Studies

2021

A brief introduction to our unique interdisciplinary world



1. Message from the Dean



Dean
KOJIMA Yasuo

The mission of the Graduate School of Human and Environmental Studies is to deepen fundamental understanding of humans and nature through interdisciplinary approaches bridging the humanities, social sciences, and natural sciences.

In pursuit of this mission, the Graduate School strives to instill professional and technical excellence in students who will become researchers, leaders, and practitioners tackling social and environmental problems through their broad perspectives, advanced knowledge, and insights.

Two characteristics make this Graduate School unique among higher educational institutions not only in Kyoto University but also in Japan.

The first is its solid grounding in liberal arts education. The Graduate School was founded in April, 1991, as the first independent graduate school in Kyoto University, inheriting the liberal arts philosophy of the University's College of Liberal Arts and Sciences. The College's long and rich experiences in liberal arts education have been inherited by all the Graduate School faculty members, making their education and research always integrated at the highest level.

This first characteristic leads to the second: the emphasis on developing human resources who can bridge academia and society. The Graduate School believes that research can contribute to society only when research is communicated to the general public in the true sense of the word. With this belief, the Graduate School trains its students so that they can explain their research in ways people can understand.

The Graduate School of Human and Environmental Studies welcomes everyone who hopes to tackle today's social and environmental problems through interdisciplinary approaches and communicate their research to society so that research can really serve today's highly complex world.

Contents

1.	Message from the Dean	2
2.	History	3
3.	Organization.....	4
4.	Graduate School of Human and Environmental Studies	5
4-1.	Department of Human Coexistence	5
4-2.	Department of Cultural Coexistence.....	6
4-3.	Department of Interdisciplinary Environment	7
4-4.	Admissions.....	8
5.	Faculty of Integrated Human Studies	8
6.	Academic Staff	9
7.	Students.....	10
8.	Access	11

2. History

The Graduate School of Human and Environmental Studies was established in April, 1991, originally independent of any undergraduate college. Then in 2003, the Faculty of Integrated Human Studies became the undergraduate college of the Graduate School of Human and Environmental Studies.

The original organization of the Faculty of Integrated Human Studies was founded in 1949 as a branch school of Kyoto University, and was at that time called “Yoshida College”. It was officially named the “College of Liberal Arts and Sciences” in 1954. In October, 1992, the College was reorganized and renamed the “Faculty of Integrated Human Studies”, and 130 freshmen were admitted into the Faculty in April, 1993.



Main Gate of the College of Liberal Arts and Sciences
(September, 1975) (Kyoto University Archives)

In April, 2003, the Graduate School and the Faculty of Integrated Human Studies were integrated to form the new Graduate School of Human and Environmental Studies in order to achieve higher academic goals. Accordingly, the divisions within the two organizations have been reorganized. The Faculty of Integrated Human Studies remains an undergraduate department, and its courses are taught by the Graduate School faculty.

■ Chronological table

1897	June	Kyoto Imperial University was founded.
1947	Oct.	Kyoto Imperial University was renamed Kyoto University.
1949	Sept.	The Branch School of Kyoto University (<i>Bunkō</i>) was opened on the campus of the former Third High School to provide education in the liberal arts.
1954	Apr.	The Bunkō was renamed the College of Liberal Arts and Sciences.
1991	Apr.	The Graduate School of Human and Environmental Studies was established.
1992	Oct.	The College of Liberal Arts and Sciences was reorganized as the Faculty of Integrated Human Studies.
2003	Apr.	The Graduate School of Human and Environmental Studies and the Faculty of Integrated Human Studies were integrated together to reach for yet higher academic goals.



Graduate School of Human and
Environmental Studies Bldg



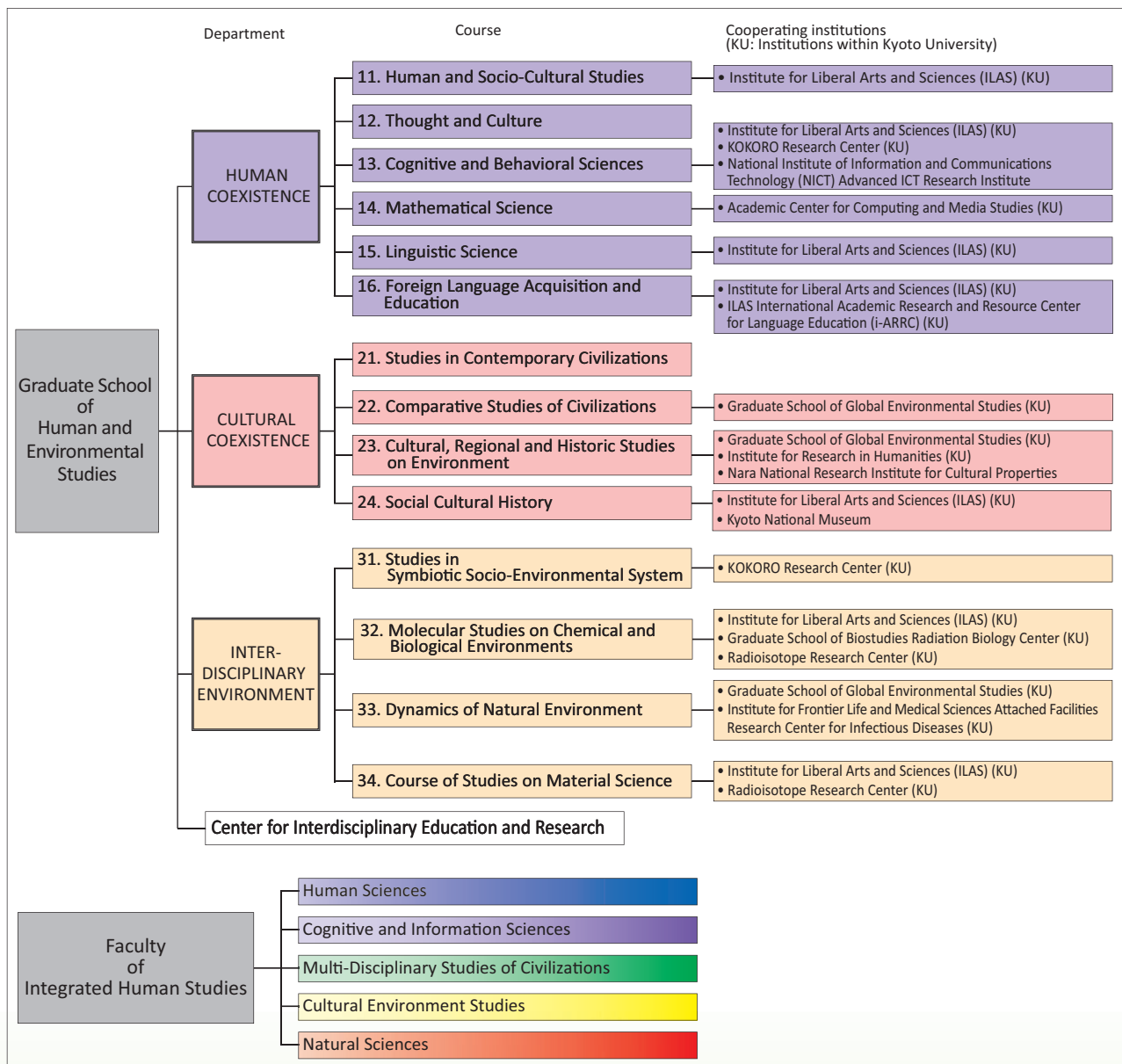
Faculty of Integrated Human Studies Bldg

3. Organization

■ Interdisciplinarity: a wide range of research fields

The Graduate School consists of three departments: the Department of Human Coexistence, the Department of Cultural Coexistence, and the Department of Interdisciplinary Environment.

The most prominent characteristic of the school is its wide range of research fields, spanning the humanities, social sciences, and natural sciences. This interdisciplinary stance enables us to reassess and restructure traditional scholarship into new paradigms aiming for harmonious coexistence between humans and nature, and facilitating a more sustainable society. Courses and fields in each department are shown on pages 5-7.



■ Cooperation with other institutions

Another strength of the Graduate School is its cooperation with other academic institutions. Its faculty members work closely with 11 other institutions both within and outside Kyoto University to attain their research and educational objectives more thoroughly and dynamically.

4. Graduate School of Human and Environmental Studies

4-1. Department of Human Coexistence

Scientific progress simultaneously enriches and challenges modern societies, as new technologies entail new human interactions and affect mental and physical well-being. Our Department studies humans not only as individuals, but as coexisting societies and communities. We train researchers, educators and professionals to develop flexible responses to social problems.

For more details, see https://www.h.kyoto-u.ac.jp/en/faculty/en_gr_list#01

Assoc. Prof. Hironari Takeda
Specialization: Aesthetics and art history



Assoc. Prof. Takeda explains the relationship between art and society.

Prof. Senjo Shimizu
Specialization: Partial differential equations (Analysis)



Graduate students and members discuss mathematical ideas in Prof. Shimizu's laboratory.

Prof. Noriyuki Nishiyama
Specialization: Language teaching, Language policy, Intercultural education and French studies



Prof. Nishiyama with the Prime Minister of Vanuatu, Charlot Salwai

Course	Field	Research and Education Topics
Human and Socio-Cultural Studies	Psycho-Social Development	Sociology of education; Inclusion and exclusion in education / Developmental psychology; Identity crisis in adolescence; Early childhood education and care; Analysis of testimony / Psychopathology; Psychoanalysis / History of education; Historical sociology / Mental health studies; History of psychiatry
	Social Behavior	Information network society; Public sphere; Reflexive modernization / Social psychology; Group dynamics / Sociology; Well-being; Social security
	Social Studies of Arts and Culture	Japanese film history; Gender and sexuality in film and visual culture; Film censorship and self-regulation / German literature and culture; Bourgeois tragedy; Public sphere / American cinema; Radio history; Audiovisual culture
Thought and Culture	Human Ontology	Phenomenology; Ethics / Metaphysics; Environmental philosophy; Japanese philosophy / British empiricism; History of philosophy; Epistemology / Philosophy of time, free will, and happiness
	Theory of Creative Arts	Performing arts; Shakespeare; Adaptation / Aesthetics; Art history
	Literary Arts and Representation	19th-century British novels; Narratology / Modern German literature; Legend as material of opera; Reason and love in art / English literature
Cognitive and Behavioral Sciences	Cognitive Science	Search behavior; Visual memory; Culture and cognition / Cognitive neuroscience; fMRI; Memory / Brain science; Neuroinformatics; Comparative cognitions / Cultural psychology; Social psychology / Perception; Human brain imaging
	Behavioral Physiology	Human neurophysiology; Synergistic muscle physiology; Postural control / Motor performance and environment; Spatial perception / Human development and education; Developmental genetics; Self-Reliance studies / Human motor control; Motor learning; Neuroscience
	Principles of Physical Functions	Exercise medicine; Skeletal muscle metabolism; Diabetes mellitus / Mental health; Autism; Developmental disorders / Skeletal muscle biology; Molecular health science; Exercise biochemistry
Mathematical Science	Mathematics of Phenomena	Stochastic analysis / Navier-Stokes equations; Maximal regularity; Free boundary problems / Mathematical physics; Spectral and scattering theory / Random holomorphic dynamical systems; Fractal / Dynamical systems; Complex dynamics
	Mathematical Informatics	Theory of computation / Information hiding; Image processing; Visualization / Visual data science / Programming language; Complex network; Machine learning / Mathematical logic; Topology; Machine learning / Real number computation; Program verification; Computable analysis
Linguistic Science	Linguistic Information Science	Evolutionary linguistics; Biolinguistics; Theoretical linguistics / Cognitive linguistics; Construction grammar; Metaphor / Typology; Gesture; French
	Comparative Language Studies	Linguistic typology; Germanic philology / German linguistics / Slavic linguistics; Baltic linguistics
Foreign Language Acquisition and Education	Foreign Language Acquisition and Education	Linguistic policy; Language teaching; Plurilingualism / Language acquisition; Multisensory processing; Curriculum development / Educational technology
	Language Education Research and Development	Practitioner research; Classroom research; Communities of Practice & collaboration / Teaching English as a foreign language; Practitioner research; Philosophical analysis / Applied social psychology; English for academic purposes; Cultural linguistics / Sociolinguistics; Language policy; Minoritized languages / Assessment in language learning; Corpus linguistics; Language teaching with ICT / Vocabulary acquisition; Language assessment; Pedagogical grammar

4. Graduate School of Human and Environmental Studies

4-2. Department of Cultural Coexistence

Never in history has dialogue been so necessary to ameliorate conflicts among nations, regions, and religions. In this global context, our Department explores ways of coexistence among different cultures, critically reexamining Western civilization and comparing it with others. We train researchers, educators, and professionals to tackle problems of civilizations using perspectives of history, society, and culture.

For more details, see https://www.h.kyoto-u.ac.jp/en/faculty/en_gr_list#02

Prof. Setsuko Nakajima

Specialization: Architectural history, Urban history



Prof. Nakajima lectures on Seifu-so, a modern Japanese-style building of Kyoto University.

Prof. Yuka Moriguchi

Specialization: History of American foreign relations, especially Cold War and cultural diplomacy



Professor Moriguchi lectures with PowerPoint slides.

Assoc. Prof. Takashi Yoshie

Specialization: Ancient history of Japan



Assoc. Prof. Yoshie explains a diary written in the Heian era.

Course	Field	Research and Education Topics
Studies on Contemporary Civilizations	Studies on Civilization Structures	German thoughts; Frankfurt School; Japanese poetry / Autonomy of law; Transitional justice; Human recalcitrance / History of modern China; Nationalism; History of historical writing / German literature; Intellectual history; History of the Jews in modern Germany
	Studies on Contemporary Societies	Money; Credit; Capitalism / Economics; History of economic thought; Globalization studies / History of writing and reading; Media studies
	Studies on International Society	United States; Foreign policy; Cultural diplomacy / Constitutional law; Judicial politics; Law and society / Cold War history; British diplomatic history
Comparative Studies of Civilizations	Complex Studies of Cultures	Philosophy / Hebrew; Judaism; Diaspora
	Studies in Regional Civilizations	Classical Chinese drama / Asian history; Fieldwork; Regional society; History of Sea power
	Studies in Interchange of Civilizations	Modern Arabic literature; Question of Palestine; Postcolonial thought / Theatre; Fin-de-siècle; Acting / Immigration history; American studies
Cultural, Regional, and Historic Studies on Environment	Cultural Anthropology	Forced migration; Memory; Oceania / Memory; Mobility; Roma(Gypsies) / Spirit possession; Embodiment; Environmental movements / Religion and spirituality; Affect and perception; Japan, Italy / Linguistic anthropology; Ethnomusicology; Interaction analysis; Reciprocal singing; Japanese folk song community
	Region, Space and Environment	Human geography; Rural; China / Region; Space and environment; Geographic information science / Historical geography
	Theory and History of Environmental Construction	Architectural history; Urban history; History of landscape / Housing; Community design; Action research / Theory of architecture; Architecture and literature
	Studies of Cultural Heritage	Spiritual culture; Method for archaeological research / Conservation science for cultural heritage; Cultural heritage disaster risk management; Mural paintings / Preservation and utilization of buried cultural properties / Study of historical material / Zooarchaeology; Environmental archaeology
Social Cultural History	Historical Environment	Portuguese overseas expansion; Demarcation; Ferdinand Magellan / Kamakura bakufu; Kamakura period / Ancient history of Japan / Contemporary history; Diaspora-Transnationalism studies; Transnational Indian independence movement
	East Asian Culture	Chinese classical literature / Political and legal system in medieval China; Research on Dunhuang and Turfan manuscripts / Modern Japanese literature; Izumi Kyoka; Akutagawa Ryunosuke / Chinese linguistics; Classical Chinese / Ancient Japanese; Stylistics; Morphology / Japanese classical literature
	Western European Culture	English; Poetry; Prosody / Irish literature; Celtic folklore, legend, myth; Irish language / English literature; Modernism; Verbal/visual representation
	Cultural Assets of Museums	Asian sculpture; Buddhist sculpture; Shinto sculpture / Archaeology; Asian ceramics; Technology propagation / Asian textiles; Asian costumes / Asian Buddhist paintings / Urushi lacquer; Lacquerware; Japanese export lacquer

4. Graduate School of Human and Environmental Studies

4-3. Department of Interdisciplinary Environment

The coexistence of humans and nature is a key factor for the future of the world, and it crucially depends on the development of science and technology. Our Department reexamines conventional ideas of scientific “development” to explore new technologies and sustainable social systems enabling such coexistence. We train insightful researchers, educators, and professionals to make logical scientific proposals for technology and social systems to harmonize humans and nature.

For more details, see https://www.h.kyoto-u.ac.jp/en/faculty/en_gr_list#03

Prof. Wataru Sano
Specialization: Politics and public policy



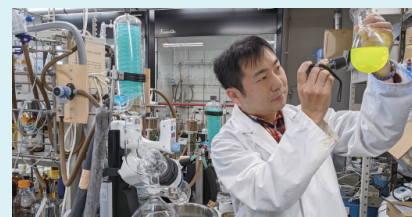
Graduate students and Prof. Sano discuss the relationship between politics and public policy in Japan.

Prof. Toshiya Kinoshita
Specialization: Atomic physics, Quantum electronics, Laser cooling and trapping



Prof. Kinoshita is checking optical alignment through an Infrared viewer.

Assoc. Prof. Satoru Hiroto
Specialization: Organic synthesis, Molecular design, Organic functional materials



Assoc. Prof. Hiroto checks luminescence from synthesized organic material.

Course	Field	Research and Education Topics
Studies in Symbiotic Socio-Environmental System	Studies in Symbiotic Socio-Environmental System	Environmental economics; Environmental valuation; Applied econometrics / Employment law; Occupational health and safety law; Labor accident insurance law / Political theory; Public policy / Community; Sustainability; Public policy
Molecular Studies of Chemical and Biological Environments	Organic Molecular Environments	Organic crystal; Crystal structure; Gas sorption phenomena / Nanoscience; Nano-medicine; Organic chemistry / Synthetic organic chemistry; Catalysis; Hydrogenomics / Three-dimensional organic molecular chemistry; Molecular design & synthesis / Organic crystals; Enantiomeric resolution by crystallization; Phase transition / Organic synthesis; Organometallic chemistry; Coordination chemistry
	Environmental Molecular Life Science	Phycology; Photosynthesis; Microbial ecology / Biofunction; Biomaterial; Life science / DNA damage response; Fanconi anemia; Replication stress / Photosynthesis; Genome editing; Cyanobacteria
Dynamics of Natural Environment	Dynamics of Biological Environment	Evolutionary ecology; Pollination biology; Plant–herbivore interaction / Plant systematics; Evolution; Conservation biology / Insect ecology; Biodiversity sciences; Tropical biology / Systematic zoology; Herpetology; Natural history / Virus; Infectious diseases; Primate model / Plant cell biology; Phycology; Environmental education / Conservation biology; Plant ecology; Phylogeography / Mycology; Taxonomy; Evolution
	Dynamics of Earth and Cosmos	Collective behavior; Physics; Machine learning / Fractal Sunshade; Biomimetics; Heat island / Analytical chemistry on natural waters; Geochemistry on rivers, lakes and the Ocean; Limnology / Oxidant formation; PM2.5; Air pollution / Petrology; Early earth; Earth's interior / Environmental science; Geochemistry; Micropaleontology / Seismology; Solid earth geophysics / Planet and satellite formation theory
Course of Studies on Material Science	Material Properties and Correlations	Surface science; Nano science; Low dimensional materials / Photoemission spectroscopy; Strongly correlated electron systems; High-temperature superconductivity / Condensed matter theory; Strongly correlated electron systems; Statistical physics / Fundamental physics; Hypothesis–Experiment Class; Physics education research / Strongly correlated electron systems; High-pressure physics; Nuclear magnetic resonance (NMR) / Laser cooling; Atom trapping; Bose-Einstein Condensation (BEC) / Frustrated magnets; Multipolar ordering / Solid state spectroscopy; Nonlinear spectroscopy; Ultrafast spectroscopy / Nonlinear physics; Non-equilibrium statistical physics / Soft matter physics; X-ray scattering technique; Polymer crystallization / Condensed matter physics; Photoemission spectroscopy; Strongly-correlated electron systems
	Material Functions and Correlations	Electrochemical devices; Renewable energy systems; Advanced analysis technology / Photonic materials; Luminescence; Glass-ceramics / Catalysis; Photocatalysis; Artificial photosynthesis / Plasma chemistry; Thin film processing; Electronic materials and devices / Atomic collision process with nuclear reaction; Radiation detection and measurement; Environmental radiation / Spectroscopy; Persistent luminescent material; Phosphor / Catalysis; Photocatalysis; Spectroscopy

4. Graduate School of Human and Environmental Studies

4-4. Admissions

■ Student categories

- Degree students
 - Master's Course Entrance examination : Mid-September and early February
 - Doctoral Course Entrance examination : Early February
- Non-degree students : Research students / Special research students / Special auditing students

■ Language requirements

Most instruction at the Graduate School is given in the Japanese language, and the Japanese proficiency level required varies depending on the discipline. For detailed information on language requirements, please see <https://www.h.kyoto-u.ac.jp> (Entrance exam and information) or contact the Admissions Office.

■ For information

Please contact the Admissions Office

Fax : +81-75-753-7874

110jinkan_jimu@mail2.adm.kyoto-u.ac.jp

■ Academic Calendar

[First Semester (April - September)]

April 1	Start of First Semester
Early April	Entrance ceremony
June 18	Foundation Day (Holiday)
Late July - Early August	Final exams and feedback
Early August – Sept. 30	Summer break
Mid-September	Fall entrance examination
September 30	End of Semester

[Second Semester (October - March)]

October 1	Start of Semester
Late November	University Festival (No class)
End of December - Early January	Winter break
Early February	Winter entrance examination
March 31	End of Semester



5. Faculty of Integrated Human Studies

■ About

The teaching and research activities of the Faculty aim to integrate the humanities, and the social and natural sciences into more interdisciplinary and internationally oriented academic approaches appropriate for our time. The idea of integrated human studies was conceived for the purpose of restructuring the former College of Liberal Arts and Sciences and producing a new faculty unconstrained by the boundaries of established and restricted research fields.

The Faculty aims to produce graduates able to cope competently and tolerantly with the difficult problems facing modern society, and to find new ways to integrate the natural and human worlds not only through the detailed research work assigned to each discipline, but also through insights into multiple interdisciplinary spheres. And thus, we hope to meet the manifold challenges of the future.

■ Five Divisions

The Faculty consists of five Divisions (Human Sciences, Cognitive and Information Sciences, Multi-disciplinary Studies of Civilizations, Cultural Environment Studies, and Natural Sciences) that educate students through their interdisciplinary curricula.

■ Major and Minor Specializations

All students choose major and minor specializations to acquire knowledge and expertise in a variety of disciplines.

6. Academic Staff

■ Faculty Members

(As of May 1 each year)

		2019	2020	2021
Professors		69	65	66
Associate Professors		28	31	30
Senior Lecturers		0	1	2
Assistant Professors		18	17	18
Subtotal		115	114	116
Program-specific Faculty	Professors (Fixed Term)	0	1	0
	Associate Professors (Fixed Term)	1	1	2
	Senior Lecturers (Fixed Term)	3	1	1
	Assistant Professors (Fixed Term)	4	2	4
	Subtotal	8	5	7
Cooperating Faculty	Professors	17	18	19
	Associate Professors	13	11	9
	Assistant Professors	2	2	2
	Subtotal	32	31	30
Department Visitors	Visiting Professors	5	5	6
	Visiting Assistant Professors	4	4	4
	Subtotal	9	9	10
Total		164	159	163

■ Foreign Scholars

	2018	2019	2020
Kyoto University Visiting Professors	4	5	1
Guest Scholars	3	6	1
Guest Research Associates	10	5	1
Total	17	16	3

■ International Seminar by Visiting Professors



Prof. Paolo Hertier Università di Torino, Italy "Written in your Heart: King's bodies from Leviathan to 'robotto no kokoro'" (March 11, 2019)



Prof. Mario Wenning University of Macau, China "Human and Animal Wisdom – An Intercultural perspective" (June 27, 2019)



Prof. Mohan Moorti Pant Khwopa Engineering College, Purbanchal University, Nepal "Himalayan Landscape – Representation and Meaning in Nepalese Context" (November 5, 2019)



Prof. Sebastian Mahlik University of Gdańsk, Poland "Do we still remember Nicolaus Copernicus in Poland" (November 19, 2019)



Prof. Mustafizur Rahman, University of Dhaka, Bangladesh "A Journey through Bangladesh" (March 3, 2020)



Prof. Wei Wang Xi'an Jiaotong University, China "Brief introduction to the traditional customs in Xi'an" (April 21, 2021) (held online)

7. Students

■ Graduate School

(As of May 1 each year)

		2019	2020	2021
Master's Course	Human Coexistence	177	183	168
	Cultural Coexistence	103	94	90
	Interdisciplinary Environment	89	95	82
	Total	369 (96)	372 (86)	340 (78)
Doctoral Course	Human Coexistence	161	173	162
	Cultural Coexistence	102	106	105
	Interdisciplinary Environment	57	55	53
	Total	320 (76)	334 (79)	320 (81)
Research Student and others	Research Student	26 (18)	19 (17)	14 (9)
	Special Auditing Student	2 (2)	0 (0)	0 (0)
	Special Research Student	1 (1)	2 (2)	4 (4)
	Short-term International Student	1 (1)	0 (0)	0 (0)
	Total	30 (22)	21 (19)	18 (13)

※ The number in parentheses indicates international students included in the total.

■ Undergraduate

(As of May 1 each year)

	2019	2020	2021
Degree Students	575 (7)	571 (7)	594 (9)
Non-degree Students	12 (0)	12 (0)	11 (0)
Total	587 (7)	583 (7)	605 (9)
Special Auditing Students	43 (42)	23 (22)	1 (1)

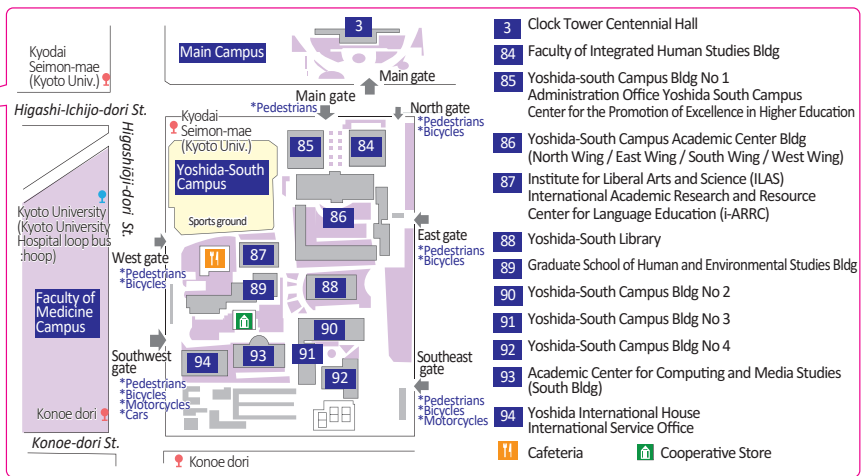
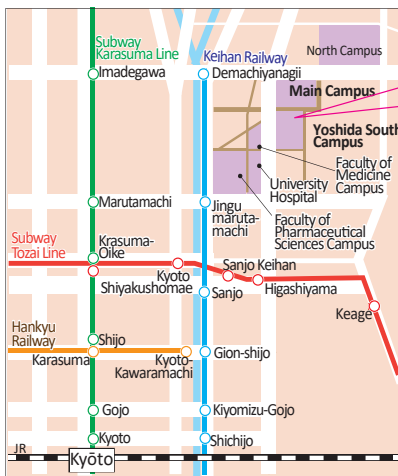
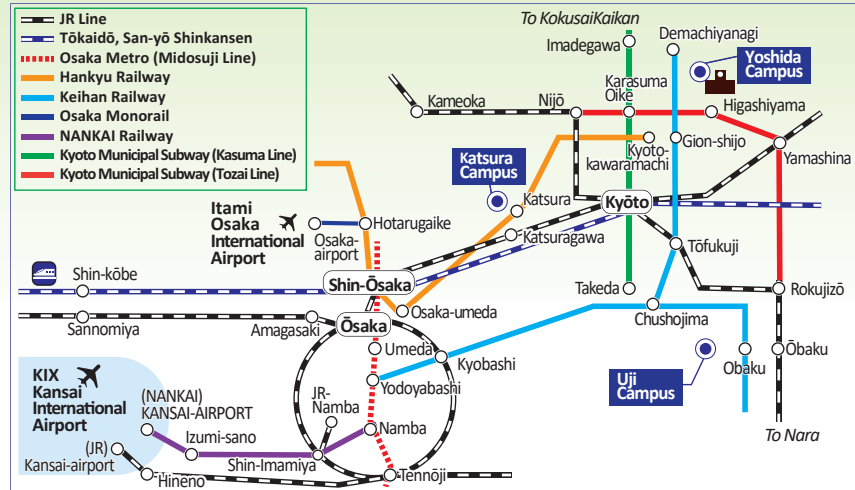
※ The number in parentheses indicates international students included in the total.

■ Origins of international students


(As of May 1, 2021)

Country / region	Graduate Students			
	Master's Course	Doctoral Course	Research Student and others	Subtotal
ASIA				
China	71	58	13	142
India		1		1
Indonesia		1		1
Malaysia		1		1
Mongolia		1		1
Republic of Korea	2	8		10
Singapore		1		1
Taiwan	2	6		8
OCEANIA				
Australia	1			1
NORTH AMERICA				
United States of America	1	2		3
LATIN AMERICA				
Chile	1			1
EUROPE				
Germany		1		1
Greece		1		1
Subtotal	78	81	13	
Total		172		172

8. Access



Access from Kansai International Airport

Kansai International Airport	JR Airport Limited Express “Haruka” (about 80 min.)						JR Kyoto Sta.
	JR Rapid Train “Kankukaisoku” (about 80 min.)		JR Ōsaka	JR Rapid Service “Shin-Kaisoku” (about 30 min.)			
	NANKAI Rwy. “Limited Express rapid-β” (about 38 min.) “Airport Express” (about 45-55 min.)		NANKAI Rwy. Namba	Osaka Metro Namba	Osaka Metro Midosuji Line (about 14 min.)	JR Shin-Ōsaka JR Rapid Service “Shin-Kaisoku” (about 25 min.)	
	Kansai Airport Limousine (about 100 min.)						
JR Kyoto Sta.	Taxi (about 20 - 40 min.)						
	Kyoto City Bus No. 206 (about 30 min.) <i>Kyoto Sta. -- Konoedori or Kyodai Seimonmae (Kyoto University)</i>						
	KYOTO UNIVERSITY hospital loop bus “hoop” (about 26 min.) <i>Kyoto Station, Hachijo Gate -- Kyoto University</i>						
	Kyoto Municipal Subway (about 10 min.)	Kyoto Municipal Subway Imadegawa Sta.	Kyoto City Bus No. 201 (about 10 min.) <i>Karasuma Imadegawa (Subway Imadegawa Sta.) -- Konoedori or Kyodai Seimon-mae (Kyoto Univ)</i>				
Hankyu Rwy. Osaka-Umeda Sta.	Hankyu Rwy. “Limited Express” (about 43 min.)		Hankyu Rwy. Kyoto-kawaramachi Sta.	Kyoto City Bus No. 201 or No. 31 (about 15 min.) <i>Shijo Kawaramachi -- Konoedori or Kyodai Seimon-mae (Kyoto Univ.)</i>			Kyoto University Yoshida Campas
Keihan Rwy. Yodoyabashi Sta.	Keihan Rwy. “Limited Express” (about 55 min.)		Keihan Rwy. Demachianagi Sta.	Kyoto City Bus No.201 (about 10min) <i>Demachianagi Sta. -- Kyodai Seimon-mae (Kyoto Univ.)</i>			
Kyoto Municipal Subway Higashiyama Sta.	Kyoto City Bus No. 201, No. 206 (about 15 min.) <i>Higashiyama Sanjo (Subway Higashiyama Station) -- Konoedori or Kyodai Seimonmae (Kyoto Univ)</i>						

Kyoto

As an ancient capital of Japan, Kyoto has always been the center of Japanese history, culture, and religion. Present-day Kyoto is known not only for its traditional heritage but also for its high-tech industries. Kyoto is a place where old meets new in an international environment.

Kyoto University



Since its foundation in 1897, as one of the first imperial universities in Japan, Kyoto University has remained faithful to the principles of academic freedom and to its commitment to addressing highly complex and diverse global issues. The University is the second largest national university in Japan with about 13,000 undergraduate students and 9,500 graduate and professional degree students.



Contact

Graduate School of Human and Environmental Studies
Faculty of Integrated Human Studies
Kyoto University

Yoshida-Nihonmatsucho, Sakyo-ku, Kyoto 606-8501, Japan

<https://www.h.kyoto-u.ac.jp>

